



CRESCENTA VALLEY WATER DISTRICT

Ramsdell Mixing Station Rehabilitation Project

Crescenta Valley Water District (CVWD) will be rehabilitating the Ramsdell mixing station located at 4135 Ramsdell Ave as part of CVWD's FY 24/25 Capital Improvement Program. This facility is crucial in ensuring that our water meets all safety standards. Below you'll find helpful information related to this project and how you may be impacted.

For the exact location, see the project location map below.

CONSTRUCTION SCHEDULE:

June 9th, 2025- Preparation for construction

June 16th, 2025- Anticipated start of construction

June 30th, 2025- Estimated end of construction

Schedules are subject to change as weather and unforeseen circumstances are always a factor.

Access will be provided for emergencies, mail delivery, and trash services. Residents will have access to their properties. CVWD advises that residents avoid traveling through the construction zone whenever possible. CVWD will provide an updated construction schedule via CVWD's website (www.cvwd.com/project-notifications) to better inform the residents of the construction activities as the project progresses.

As in most construction projects, this work will create a certain amount of unavoidable public inconvenience.

Three issues that the public needs to know about during construction:

1. The Northwoods Village's North gate will be temporarily inaccessible until construction is finished. Until access to the North gate is restored, please use the South gate for access into and out of Northwoods Village.
2. CVWD crews will install temporary parking and traffic restrictions along Ramsdell Ave and Mayfield Ave. This will allow our crews to work in a safe and expeditious manner to complete the project. Temporary "No Parking" signs will be posted a minimum of two (2) days before construction. We request that you observe these signs and any other traffic control. To minimize the impact on your schedule and avoid delays, it is recommended that you allow extra time for travelling into and out of the construction zone.
3. Due to the sensitive nature and impact of this facility, we are limited in the amount of time to complete this project, causing our crew to work at least one 24-hour shift. While the excavation will not be scheduled in 24-hour shifts, the second phase of this project will move to 24-hour shifts, which will begin between Tuesday, June 17th and Wednesday, June 18th.

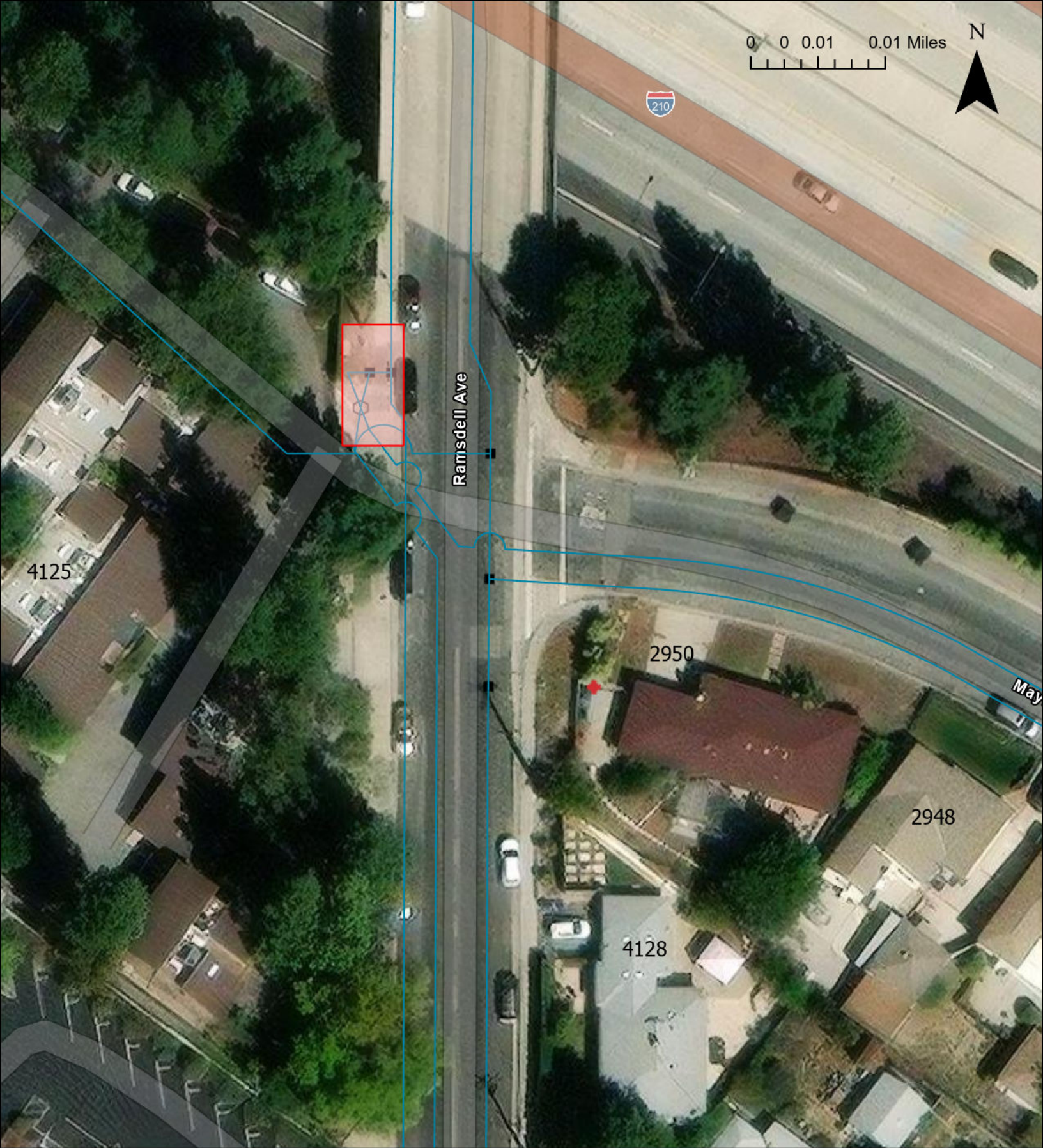
We appreciate your patience and cooperation as we work hard to provide the community with a reliable source of water for future use. Additional information will be updated periodically on CVWD's website.

If you have any questions or comments concerning this project, please contact:

Darlene Telles, Project Manager

Email: dtelles@cvwd.com

Phone: 626-437-8662



0 0.01 0.01 Miles



Ramsdell Ave

4125

2950

2948

4128

May

Legend

- WtMain
- Fittings
- ⊕ Hydrants
- Reservoirs
- Project area

Rehabilitation of the Ramsdell Mixing Station (4135 Ramsdell Ave),
Project E-977

